

## Integration of the DR 3900 into a Local Area Network (LAN)

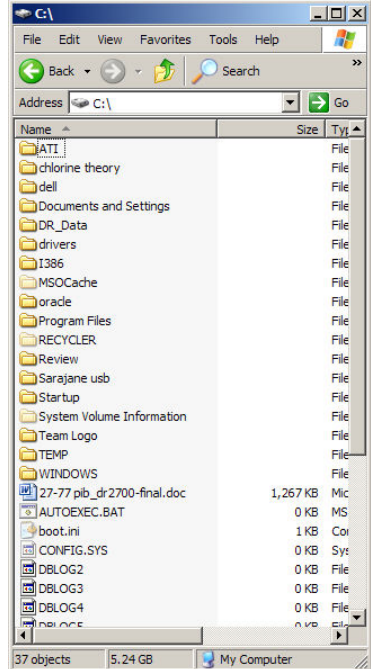
1. Establish physical Ethernet connection between DR 3900 and the network using an Ethernet cable.
2. Setup network computer (target system) as described below.
3. Setup DR 3900 as described below

### Introduction

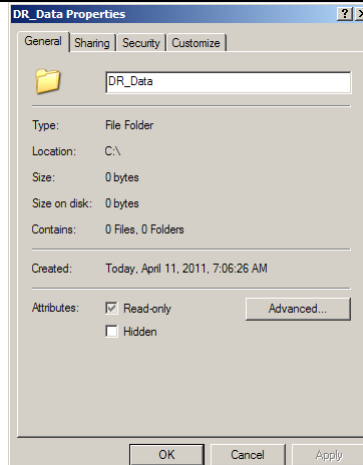
The DR 3900 is designed to send measurement and other data directly to a folder in a Windows file system provided the following prerequisites are fulfilled:

- The folder structure for the data storage has been established on the target system . The default structure is **C:\DR-Data** but this can be freely configured as long as both configurations (on the DR 3900 and the target system) match.
- The folder structure on the target system must be shared. Either granting full access to everyone (described below) or with access limited to the default user and password defined on the DR 3900 (User: **DR\_XXXX** / Password: **DR\_0000**) or a free (matching) configuration.
- The user **DR\_XXXX** (default user defined on the DR 3900) has to be established on the target system.
- The DR 3900 has been registered in the network using a dynamic (DHCP) or fixed IP-address.
- The information about the network server (computer) has been entered into the DR 3900 (computer/server name used in the network or fixed IP-address)

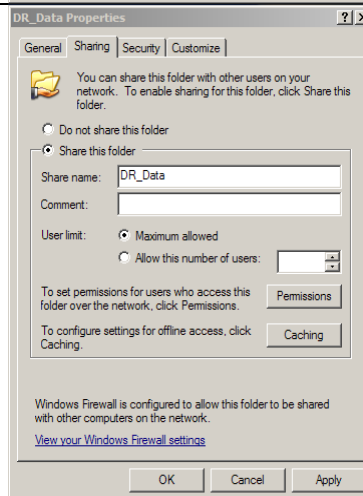
### Setup Network Computer

Action	Screenshot
<p><b>The following folder has to be established on the PC: C:\DR_Data</b> (default, can be changed but also has to be changed on the DR 3900 to match).</p>	 <p>The screenshot shows a Windows Explorer window displaying the contents of the C:\ drive. The folder 'DR_Data' is highlighted in blue. The window title is 'C:\'. The address bar shows 'C:\'. The status bar at the bottom indicates '37 objects' and '5.24 GB'.</p>

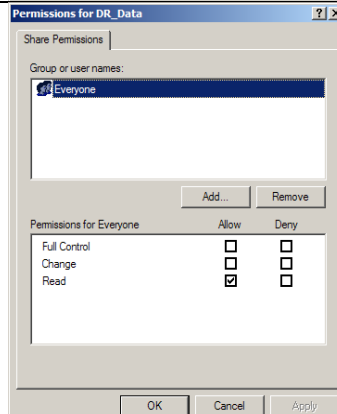
**Share the Folder:** Right-click folder in explorer and chose 'properties'



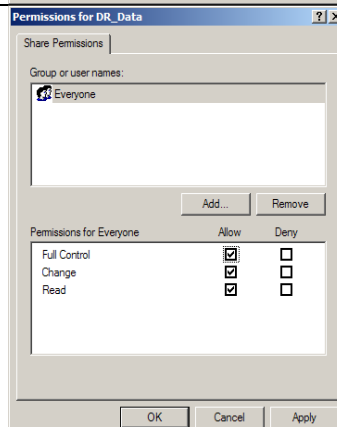
Click on the 'sharing' tab and chose 'share this folder'



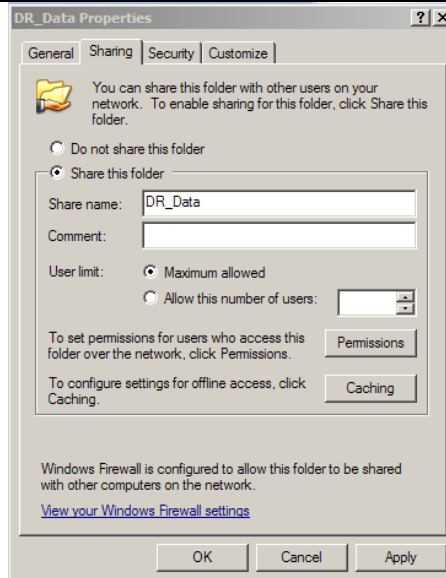
Click on 'permissions'



Chose 'everyone' and check 'full control'+ 'change'+ 'read'

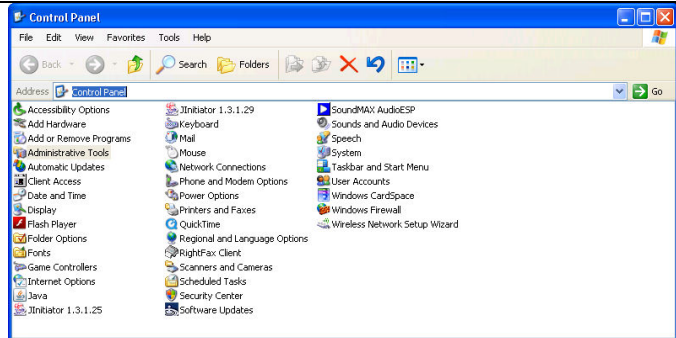


Click on 'Apply' then OK to close window

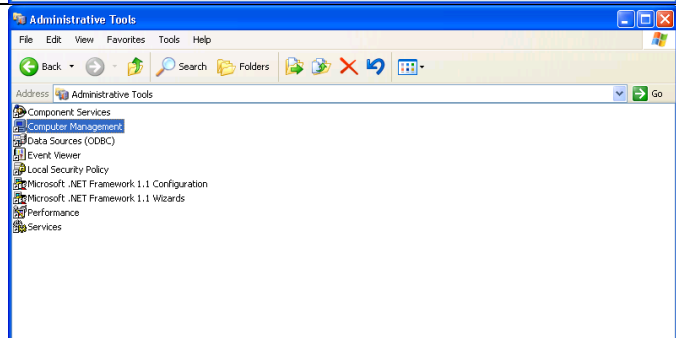


Click 'Apply' then OK to close other window

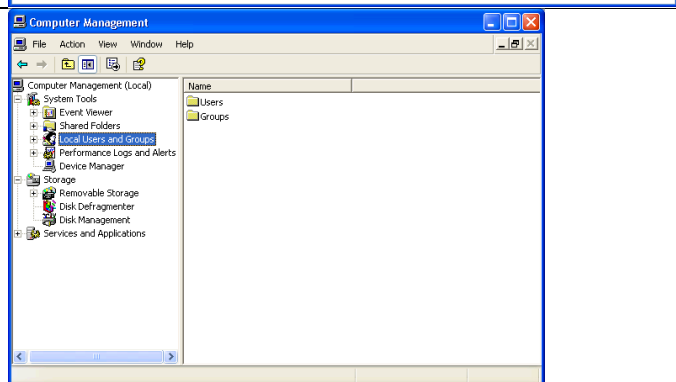
Establish the new user DR\_XXXX on the system via 'Start' > 'Settings' > 'Control Panel'

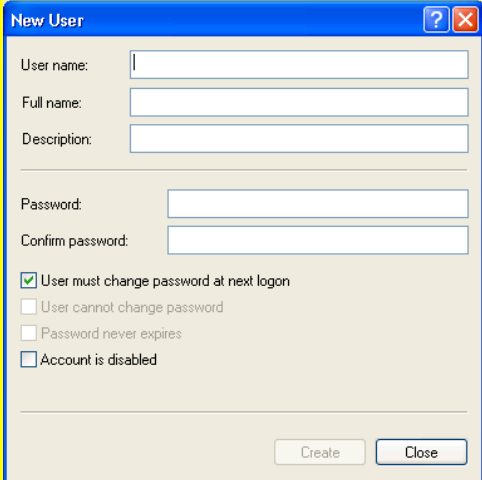
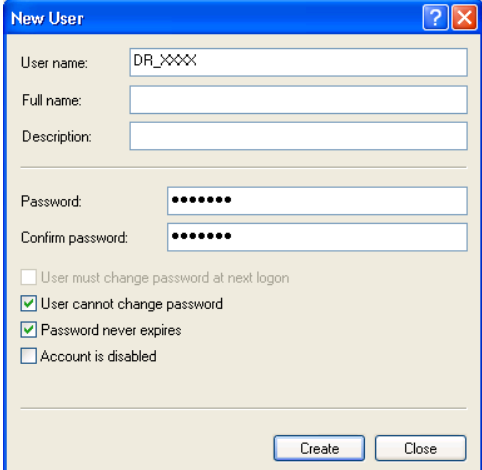


Chose 'Administrative Tools'

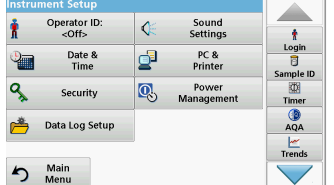
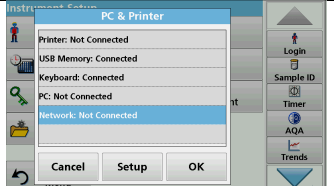
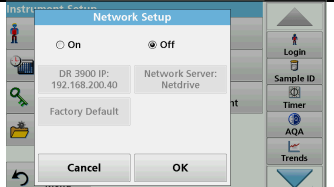


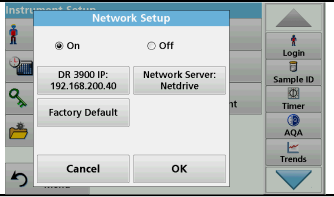
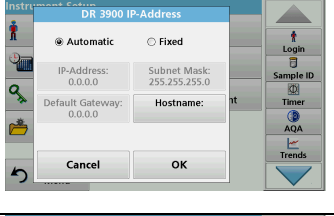

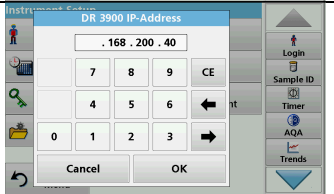
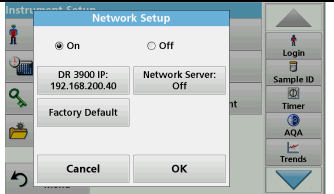
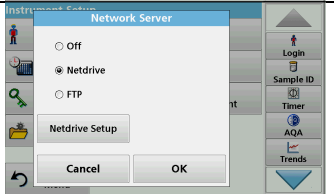
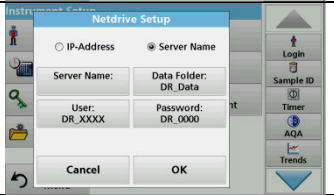
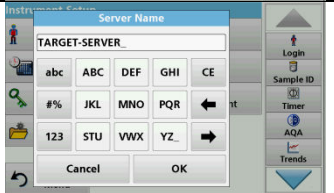
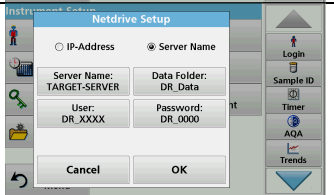
Chose 'Computer Management'



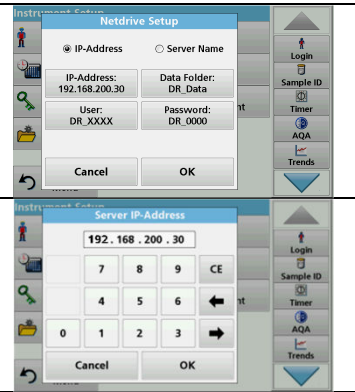
<p>Open the 'Local Users and Groups' &gt; 'Users'  Right click on 'Users' Folder &gt; Select 'New User'</p>	
<p>Enter Username: DR_XXXX  Enter Password: DR_0000  Re-enter Password: DR_0000  Uncheck: User has to change password  Check: User cannot change password  Check: Password never expires  Un-check: Account is disabled  Click 'create'  Click 'close'</p>	

## Setup DR 3900

Action	Screenshot
<p>From the main menu chose 'instrument setup'</p>	
<p>Chose PC &amp; Printer</p>	
<p>Click on Network and click 'Setup'</p>	

<p>Select 'On'</p>	
<p><b>Settings for the IP address of the DR 3900 in the network</b></p>	
<p>Click on DR 3900 IP – default is 'Automatic' (for DHCP)</p> <p><b>IMPORTANT NOTE:</b> A hostname should be entered if the DR 3900 is supposed to be contacted by other instruments such as controllers in a LINK2SC network – please contact your IT department for a valid host name!</p>	
<p><u>Alternatively</u> a fixed address and subnet mask can be set, by selecting 'Fixed' and ...</p>	
<p>....entering the right addresses using the buttons 'IP-Address', 'Subnet Mask'.</p> <p><b>IMPORTANT NOTE:</b> Please contact your IT department to get an appropriate IP address and subnet mask.</p>	
<p><b>Settings for the network server (computer) / target system</b></p>	
<p>Click on 'Network Server'</p>	
<p>Click on 'Netdrive'</p>	
<p>Click on 'Netdrive Setup'</p>	
<p>Specify the network server by entering the server name</p> <p><b>IMPORTANT NOTE:</b> Please contact your IT department to get the correct server name.</p>	
<p>Optional: You may change the name of the Data Folder, the User name and the password.</p> <p><b>IMPORTANT NOTE:</b> They have to match with the settings on the target system/Network computer.</p>	

Alternatively you can specify the network server by using a fixed IP-address.



## DR 3900 - Error Messages and Trouble Shooting

Main Message	Details	Error Analysis
<p>Automatic retrieval of the local IP-address failed!</p> <p>Please check the connection and contact your administrator.</p>	<pre>udhcp (v1.12.4) started Sending discover... Sending discover... No lease, failing</pre>	<p>Either the physical network connection is interrupted or the server (DHCP) does not respond. <a href="#">Check physical network connection.</a></p>
<p>Remote server unreachable!</p> <p>Please check the connection and contact your administrator.</p>	<pre>PING 10.130.31.134 (10.130.31.134): 56 data bytes  --- 10.130.31.134 ping statistics --- 1 packets transmitted, 0 packets received, 100% packet loss</pre>	<p>The network server is not responding. <a href="#">Make sure that the network server is online.</a></p>
<p>Remote server unreachable!</p> <p>Please check the connection and contact your administrator.</p>	<pre>ping: bad address 'EWQDUSNB132'</pre>	<p>The fixed address of the DR 3900 is not accepted in the network. <a href="#">Change to 'automatic'.</a> The server name entered for the network server is not correct. <a href="#">Enter correct server name.</a></p>
<p>Mounting network drive failed!</p> <p>Please check the connection and contact your administrator.</p>	<pre>mount error 13 = Permission denied</pre>	<p>The server which is contacted using the IP address entered for the network server does not grant access. <a href="#">Check the entered IP address.</a></p>
<p>Mounting network drive failed!</p> <p>Please check the connection and contact your administrator.</p>	<pre>retrying with upper case share name mount error 6 = No such device or address</pre>	<p>The target folder does not exist or is not shared. <a href="#">Make sure the folder exists on the target system and is shared.</a></p>